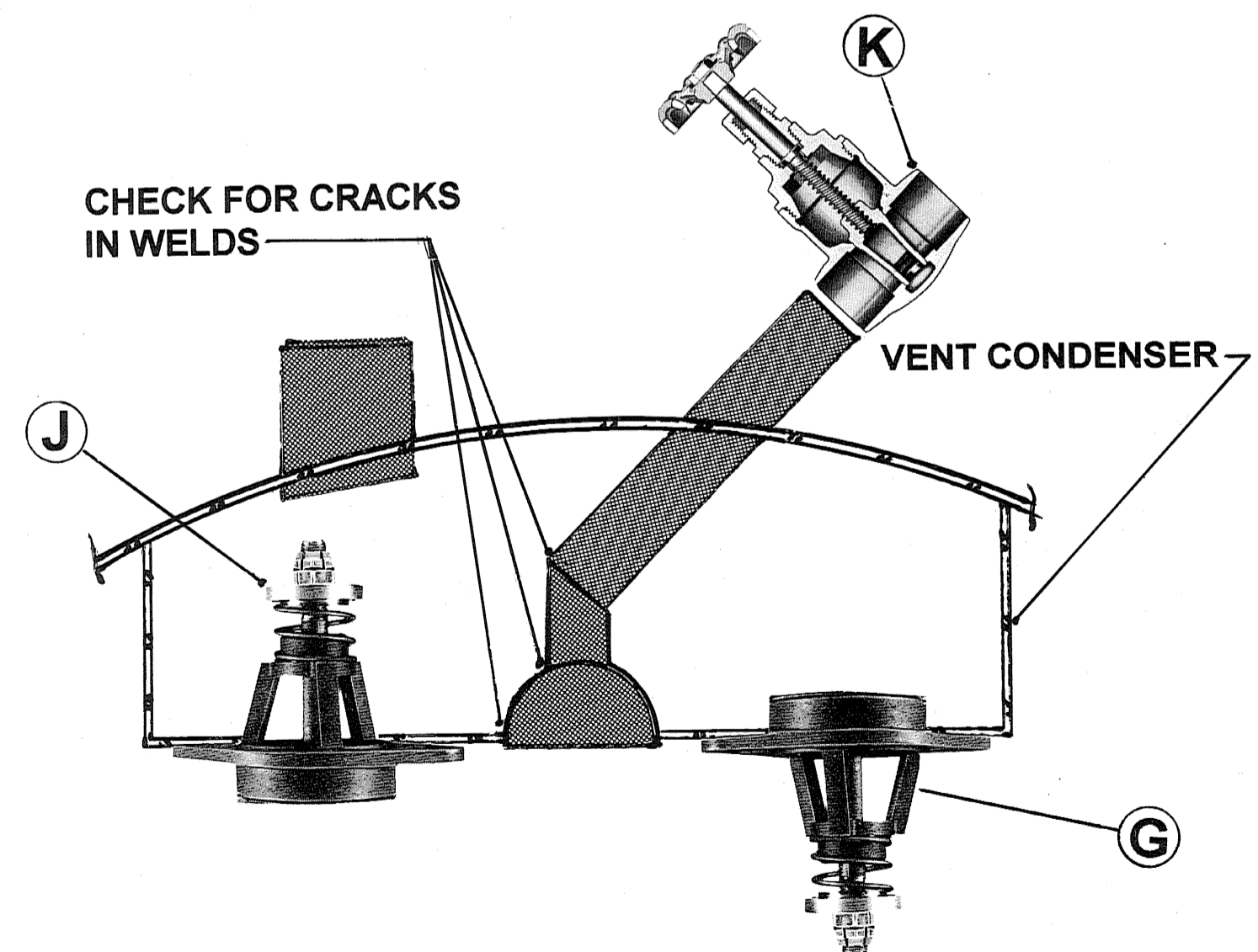


**VERTICAL SPRAY TRAY DEAERATING  
HEATER ON HORIZONTAL  
STORAGE TANK**

**\*PEMCO DESIGN SERVICE INC\***  
53 PRIMROSE LANE, LEVITOWN, NEW YORK 11756  
PHONE (516) 735-6629 FAX (516) 735-8153

- (A) HOLD DOWN ANGLES OR TROUGH MUST SEAT FIRMLY ON TOP OF TRAY ASSEMBLIES. TRAY CHANNELS MUST POINT UP. (TO RETAIN WATER)
- (B) WATER SPEWING FROM VENT TO ATMOSPHERE. INSPECT WELD FOR CRACKS IN AREAS INDICATED IN DETAIL "B - B"
- (C) INSPECT SCREEN FOR DEBRIS OR BLOCKAGE.
- (D) INSPECT DRIP SHIELD FOR BROKEN SUPPORTS.
- (E) VERIFY ALL SPRAY VALVES HAVE EQUAL SPRING TENSION. IF NOT, REMOVE SPRAY VALVES TO TIGHTEN OR LOOSEN NUT AND RETAINER.
- (F) NOTE TEMPERATURE LIMITS. THESE TEMPERATURES MUST BE FOLLOWED TO PREVENT FLASHING THAT COULD DAMAGE THE UNIT AND VENT CONDENSER.
- (G) IF DEAERATOR CAPACITY IS REDUCED ON A PERMANENT BASIS, INVERT SPRAY VALVES ACCORDINGLY - EACH VALVE MAX. CAPACITY IS 60 G.P.M. OR CALL PEMCO FOR ASSISTANCE.
- (H) INSPECT INSIDE TRAY ENCLOSURE FOR CRACKS. ALL PARTS AND MATERIAL INSIDE TRAY ENCLOSURE ARE STAINLESS STEEL.
- (I) IF TRAY ASSEMBLIES ARE UPSET OR DISLODGED, ADD GRATING ON BOTTOM CHANNEL FOR PROPER SUPPORT.
- (J) DO NOT USE AIR OR POWER TOOLS TO REMOVE OR INSTALL SPRAY VALVES. THIS WILL CAUSE DAMAGE TO THE SPRAY VALVE STUDS.
- (K) VENT VALVE SHOULD BE OPENED 2 TO 3 TURNS FOR PROPER DEAERATION. DO NOT USE 1/8" O.D. HOLE IN GATE VALVE FOR DEAERATION.
- (L) VERIFY STEAM INLET IMPINGEMENT BAFFLE IS IN PLACE.



**SECTION "B - B"**